

# CAVIUS HEAT ALARM



Commercial reference: 3002-015  
Developed by CAVIUS

## PLEASE READ THE USER GUIDE CAREFULLY BEFORE USE AND RETAIN FOR FUTURE USE!

This Thermal Heat Alarm is designed for areas not suitable for smoke alarms due to high risk of false alarms such as; kitchens, garages or workshops.

### Technical information:

**Type of alarm:** CAVIUS heat alarm detects

- 1) rapidly increased temperature level
- 2) absolute heat level of 58 degrees C.

**Sound output:** The minimum sound level is 85dB at 3 meter.

**Battery:** Powered by a non-replaceable 3v CR123A Lithium battery with 10-year life (included).

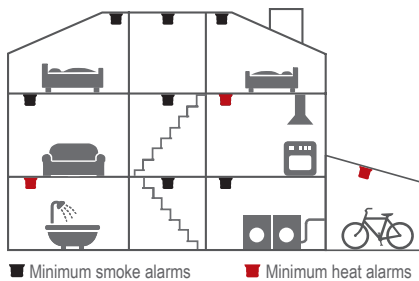
**Low battery indicator:** A short acoustic "beep" will sound and the LED will flash every 48 seconds when the battery is near the end of its life. In this stage it will continue for minimum 30 days.

The heat alarm is not active unless it is inserted in the mounting base.

### The best areas to mount the alarm:

- Areas not suitable for smoke alarms due to high risk of false alarms
- Kitchen area
- Bathroom
- Garage or workshop

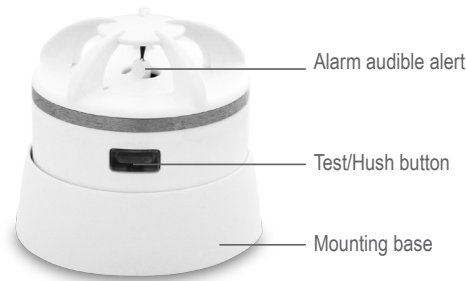
Additional alarms increase the security.



### The alarm may NOT be placed:

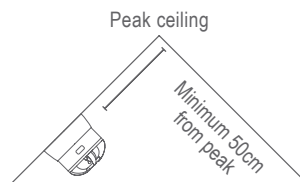
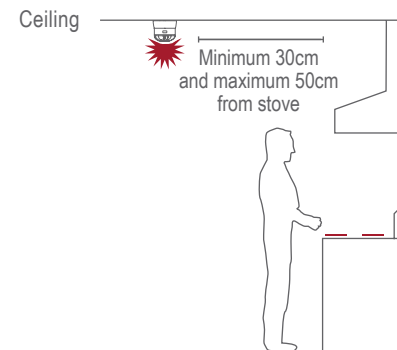
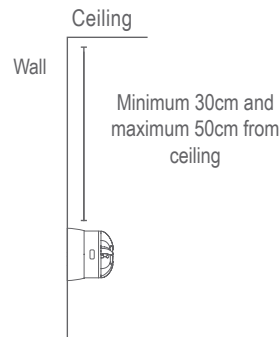
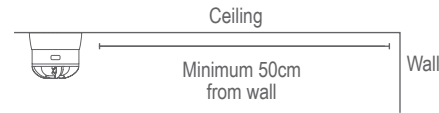
- In rooms where the temperature goes outside -10°C to +50°C.
- Bedrooms
- Lounge
- Dining room
- Hallway
- Family room

**NOTE:** In areas where smoldering fires occur over flaming fires, photoelectric smoke alarms are still the best to be installed.



### Placement:

The heat alarm is design to be installed on a ceiling or wall. Never install directly above the oven/hob/stove.

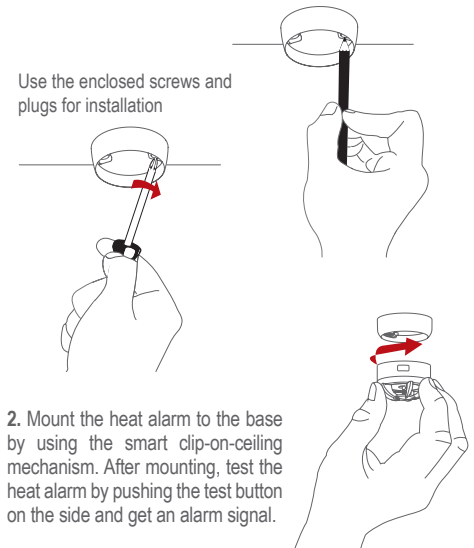


### Installation of alarm:

**Info:** The label in the product must not be removed due to important information regarding the product.

1. The heat alarm is not in the mounting base when purchased. Use the mounting base ring to mark the screw holes on the ceiling. Use the enclosed screws and plugs for installing the mounting base.

Mark up screw holes with a pen



2. Mount the heat alarm to the base by using the smart clip-on-ceiling mechanism. After mounting, test the heat alarm by pushing the test button on the side and get an alarm signal.

### Heat alarm signal:

The heat alarm has a visual and acoustic signal. In the passive state, the LED will flash every 48 seconds to indicate normal function. In alarm state the LED will speed up flash, and the alarm will emit a sweeping sound pattern design to alert occupants.

**Hush function:** In case of unintentional or false alarms, hold the side hush button for 2 seconds. This will mute the alarm for 10 minutes, after which time the alarm will automatically resume its normal function.

**Maintenance:** Test the heat alarm at least once per quarter, by pushing the test button. The heat alarm should give a loud alarm tone.

**Fault finding:** If the heat alarm activates without visible cause, then possible cause could be: You may have your heat alarm too close to the cooking hobs and stove. Try reinstalling slightly further away to alleviate any issues.

If the heat alarm does not work, when the test button is pushed, the probably cause is a faulty battery, and the heat alarm must be replaced.

**Other information:** Do not paint the heat alarm.

**Disposal:** For battery and product, please dispose properly at end of life. This is electronic waste that should be recycled.



The CE mark affixed to this product confirms its compliance with the European Directives which apply to the product. Tested to comply to the standard of system heat alarms EN54-5 class A1/R. Alarm condition aural signal pattern according to ISO 8201.

All Rights reserved: CAVIUS Aps assumes no responsibility for any errors, which may appear in this manual. Furthermore, CAVIUS Aps reserves the right to alter the hardware, software, and/or specifications detailed herein at any time without notice, and CAVIUS Aps does not make any commitment to update the information contained herein. All the trademarks listed herein are owned by their respective owners. Copyright © CAVIUS Aps.

Developed by CAVIUS Aps Julsøvej 16, DK-8600  
Manufactured in P.R.C.