

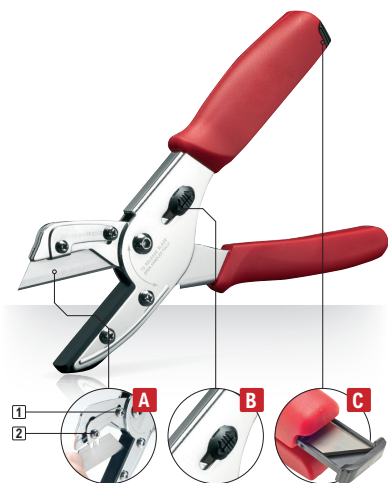
952-003



Pro·Idee

Anvil Pruner

Item-no.: 224-638, 224-639



A Release mechanism for changing blades

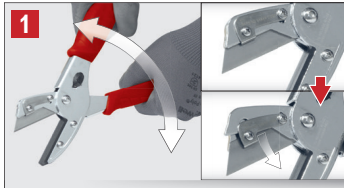
If the blade cannot be easily released, loosen Screws **1 + 2** and tighten them again afterwards.

B Blade is secured with a catch

C Integrated blade magazine

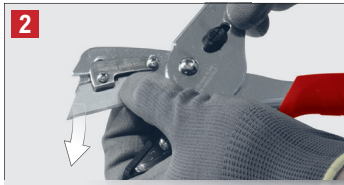


Additional accessories:
Spare blades (10 blades)

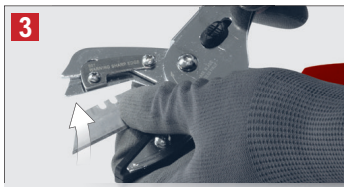


Changing the blade

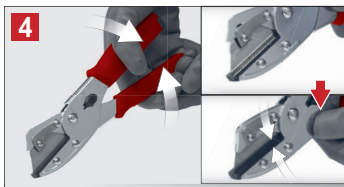
Release the blade's catch



Remove the old blade



Insert the new blade



Lock the blade

Attention: The blade is extremely sharp. Please open the packaging with great care. Please also handle the tool with great care. Always keep this tool locked when it is not in use. Keep out of reach of children.

Always wear eye protection that meets current standards. Always keep a secure footing and check the tool. Please always disconnect any electric boxes, fittings, work pieces that may be carrying power from the mains before using the tool on them.

Do not twist the tool when cutting; the blade can break and splinter in all directions.

Serious injury or damage to property may result from a failure to observe all the safety information and instructions.